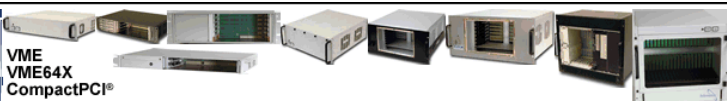
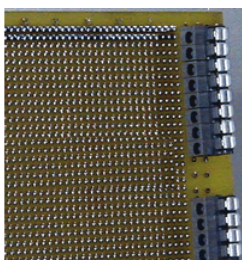
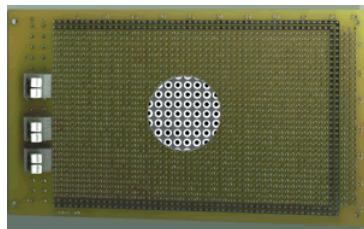
 ELECTRONICS & TECHNOLOGY, INC.					
	VME VME64X CompactPCI®				
A Fine Technology Group					
Home	About Vector	Distributors	Sales	Contact Us	Catalog Request

3U Euroblock(tm) Protoboard with Terminal blocks PART NO. : 4614-5



4614-5-XX	Mounted on EuroBlock Protoboard
4614-5-02	single dual-pole
4614-5-04	two dual-pole
4614-5-06	three dual-pole
4614-5-08	four dual-pole
4614-5-10	five dual-pole
4614-5-12	six dual-pole
4614-5-14	seven dual-pole
4614-5-16	eight dual-pole

Same as 4614-3 but instead of 96 pin DIN, includes array of PCB hi-current terminal

Description :

- Press-fit dual-pole terminal blocks accepts 14-20 AWG wire. Pushbutton release for each pole.
- Terminal block leads extend 1/8" below bord.
- Available in 2-pole to 16-pole
- PCB has pad-per-hole pattern, column and row legends.
- Pad and bus surfaces solde-plated.

Circuit Pattern :	Pad-Per-Hole
16 Pin DIP Capacity :	30
Hole Diameter :	0.042" { 1.0668 mm }
Grid :	0.100" x 0.100" { 2.54mm X 2.54mm }
Dimension { H, W, T } :	3.94" x 6.30" x 0.062" -----> { 3U x 160mm }
Material :	FR4 Epoxy Glass { MIL - P13949 type Gf }
Wire-Wrap Terminals :	T44, T46, T49 & T68
96 Pin DIN Connector :	RE96MWR { Available Separately }
Wire-Wrap Socket Pins :	R32
Recommended Card Cage:	CCK160-3U Series Card Cage { Subracks }
NEMA Grade :	FR4
UL Flammability Class :	94V - 0

email us your requirements : inquire@vectorelect.com

11115 Vanowen St., North Hollywood, CA - 91605, USA
 Tel: (818) 985 8208, (800) 423 5659; Fax: (818) 985 7708

Circlebord®, Vectorbord® and VectorPak® are registered trademarks of Vector Electronics & Technology, Inc.
 CompactPCI® is a registered trademark of PCIMG. © 2001 Vector Electronics & Technology, Inc. - All Rights Reserved
webmaster@vectorelect.com