

THIS DRAWING IS UNPUBLISHED. RELEASED FOR PUBLICATION
 © COPYRIGHT - BY TYCO ELECTRONICS CORPORATION. ALL RIGHTS RESERVED.

LOC EA	DIST 51	REVISIONS			
P	LTR	DESCRIPTION	DATE	DWN	APVD
	R	ECR 07-020023	28JAN08	LGE	RP

NOTES :

1. CONNECTOR KEYING CONFORMS TO ANSI X3T9.5/84-48.

△ LED IS 'ON' WHEN IN INSERTED STATE.

SPECIFICATIONS :

SWITCH LEGEND			
PI = PRIMARY IN	PTx = PRIMARY TRANSMIT		
SO = SECONDARY OUT	STx = SECONDARY TRANSMIT		
PO = PRIMARY OUT	PRx = PRIMARY RECEIVE		
SI = SECONDARY IN	SRx = SECONDARY RECEIVE		

PART No.	FIBER TYPE	"A" LENGTH	FIBEROPTIC PIGTAIL CONNECTOR STYLE
209161	62.5/125/250	1000 mm	FSD
3-209161	62.5/125/250	3000 mm	FSD

OBSOLETE

INSERTION LOSS

INSERTION LOSS DATA INCLUDES TWO CONNECTED PAIRS TESTED PER FOTP-34 METHOD A2

OPERATE MODE, POWER ON

PI LINE TO PRX STATION	2.8 DB MAX
SI LINE TO SRX STATION	2.8 DB MAX
PTX STATION TO PO LINE	2.8 DB MAX
STX STATION TO SO LINE	2.8 DB MAX

BYPASS MODE, POWER OFF

PI LINE TO PO LINE	2.8 DB MAX
SI LINE TO SO LINE	2.8 DB MAX
PTX STATION TO PRX STATION	5.0 DB MAX
STX STATION TO SRX STATION	5.0 DB MAX

OPTICAL CROSSTALK </= -45 DB, PER FOTP-42

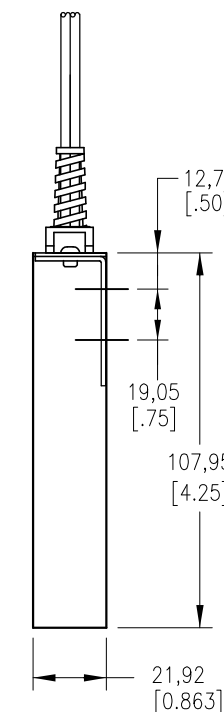
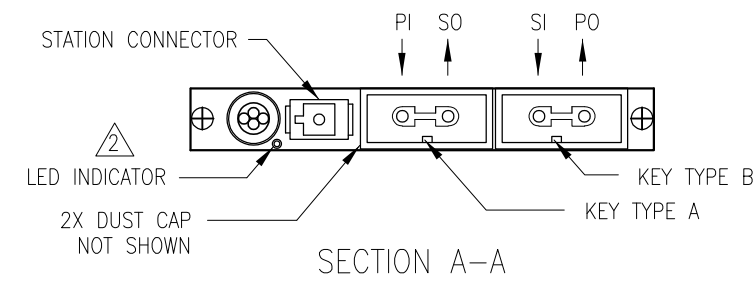
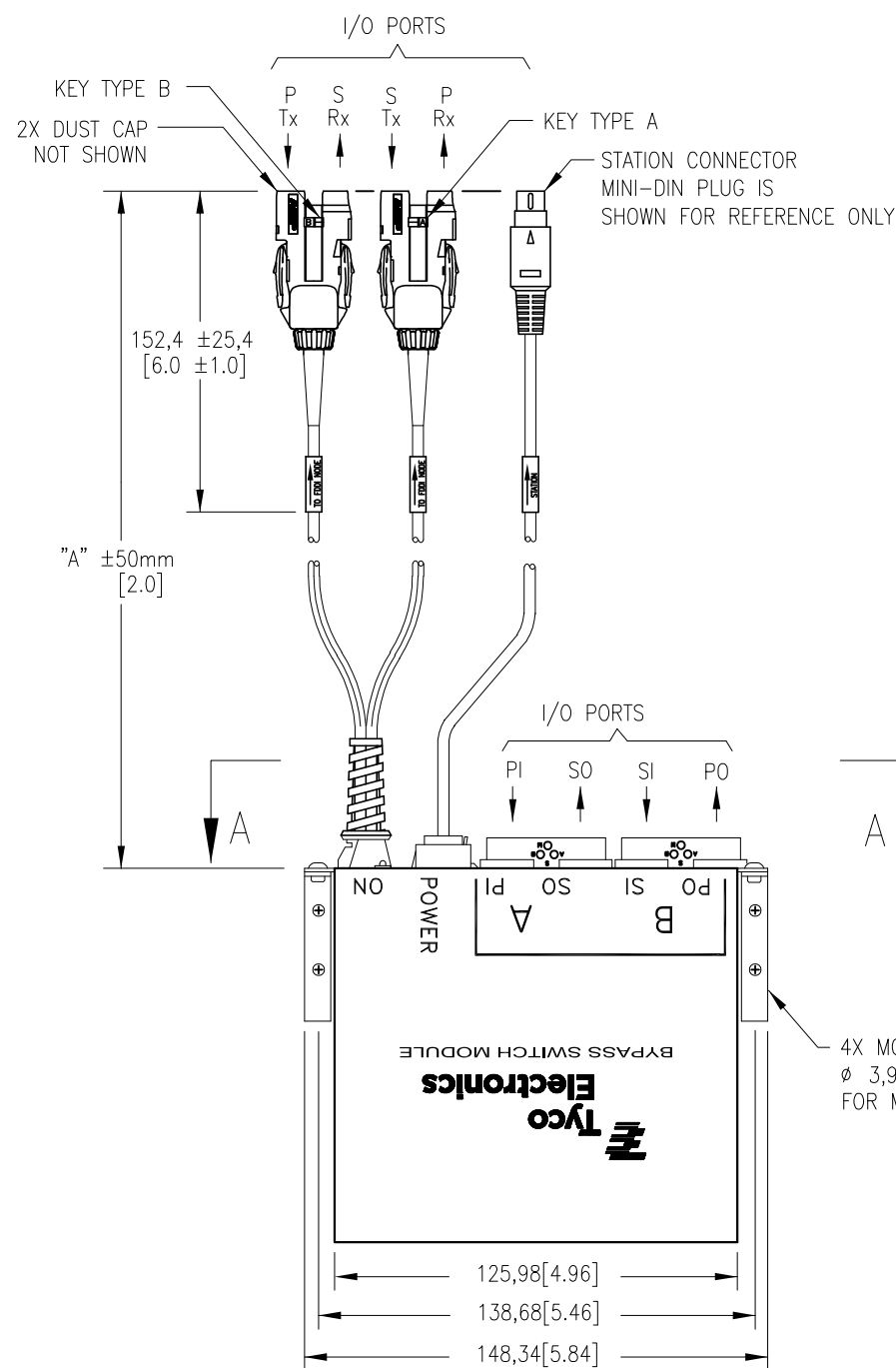
OPERATING WAVE LENGTH 750 TO 1450nm

TESTED WAVELENGTH 1300nm

POWER REQUIREMENTS 4.0 TO 5.5 VDC

190 MA MAX AT 5.0 VDC W/ LED

SWITCHING SPEED 10 MILLISECONDS MAX



	KIT P/N	MODULE P/N	POWER CORD P/N	STATION CONNECTOR TYPE
OBSOLETE	209161-1	209660-3	209501-1	6 POS. MTE RECEPTACLE
OBSOLETE	209161-2	209660-3	209502-1	6 POS. SHIELDED DIN PLUG
OBSOLETE	209161-3	209660-3	209503-1	6 POS. SHIELDED MOD PLUG
	209161-4	209660-3	209504-1	6 POS. SHIELDED MINI DIN
OBSOLETE	209161-5	209660-3	209505-1	9 POS. SUB-D
OBSOLETE	209161-6	209660-3	209506-1	4 POS. MOD PLUG
OBSOLETE	209161-7	209660-3	209507-1	25 POS. SHIELDED HDE PLUG

THIS DRAWING IS A CONTROLLED DOCUMENT.		DWN R. MONTANEZ 31OCT2001	Tyco Electronics Corporation Harrisburg, PA 17105-3608	
DIMENSIONS: mm [inches]		CHK P. DAMATO 15SEPT03	NAME	
TOLERANCES UNLESS OTHERWISE SPECIFIED: 0 PLC ± - 1 PLC ± 1,27[.05] 2 PLC ± 0,13[.005] 3 PLC ± - 4 PLC ± - ANGLES ± 2'		APVD M. KADAR-KALLEN 15SEPT03	BYPASS SWITCH KIT FSD MIC ADAPTOR/FSD MIC PIGTAILS	
MATERIAL		PRODUCT SPEC	SIZE	RESTRICTED TO
		APPLICATION SPEC	CAGE CODE	
		WEIGHT	DRAWING NO	
		A3 00779 C-		209161
CUSTOMER DRAWING		SCALE	SHEET	REV
		NONE	1 OF 1	R