

SNAPlink

Wireless serial-cable replacement

Replaces Cables in a SNAP!

The SNAPlink family of robust, mesh networking, serial wireless adapters makes it easy and quick to wirelessly connect RS-232 and RS-485/422 devices. In addition, SNAPlink increases extension distance beyond physical wire constraints, decreases installation and on-going maintenance costs, and reduces line noise problems.

Compared to other serial wireless adapters, SNAPlink adapters provide the highest performance, longest distance and quickest configuration in the industry.

Now, linking two (or more) physical serial ports or devices is a SNAP. Just connect each device to one of the SNAPlink adapters, press the Mode button to automatically pair them together, and you're done.

The SNAPlink complies with FCC Class B, IC, CE, and UL standards.

Benefits:

- Up to 3-mile range
- Reliable mesh networking provided by SNAP — an Instant-On, Self-Healing Mesh Network
- Spread Spectrum (DSSS) technology overcomes noisy environments
- 12, 24V DC powered to fit industrial environments

Two Form Factors available:

SNAPlink RS-232

SNAPlink RS-485/422

Models available with AES-128 encryption for added security.



Features

- RS-232 version has a DE-9 port with full hardware flow control
- RS-485/422 supports two & four wire, half & full duplex
- Easy setup via DIP switches or EasySet software
- Supports wireless ModBus
- Supports 1-to-1 and 1-to-Many Relationship Configurations
- -40° to +70°C Operating Temperature, Industrial Use
- Requires no change to existing equipment
- Micro-B USB port for easy connection to PCs

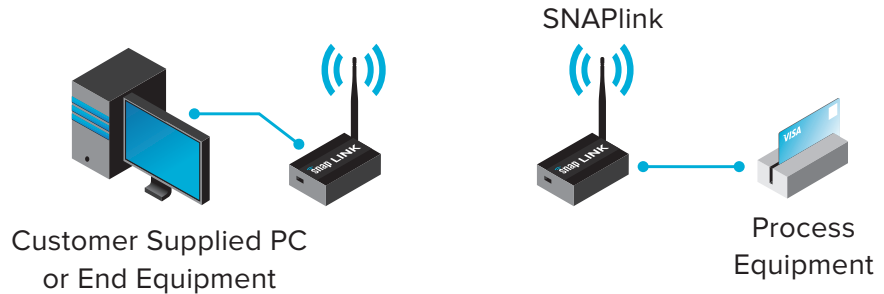
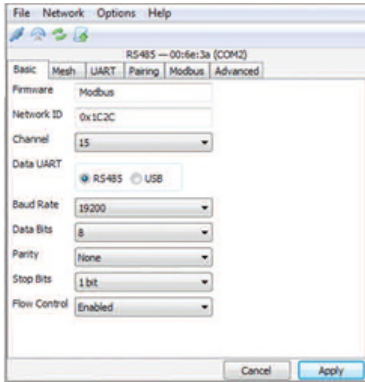
6723 Odyssey Drive // Huntsville, AL 35806
(877) 982-7888 // Synapse-Wireless.com

©2008-2017 Synapse, All Rights Reserved. All Synapse products are patent pending.
Synapse, the Synapse logo, SNAP, and Portal are all registered trademarks of Synapse Wireless, Inc.



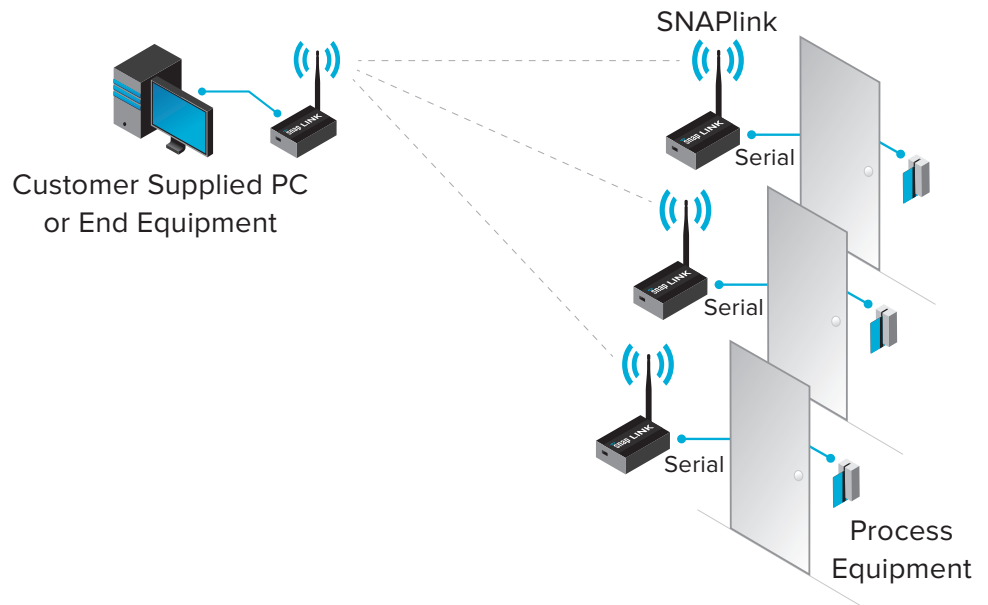
116-041613-025-C000

PC or Laptop using a pair of SNAPlink RS-232 or RS-485/422 wireless adapters to replace a cable, up to 3 miles (LoS).



The SNAPlink EasySet software applet is an easy-to-use configuration tool that streamlines the setup and configuration of SNAPlink wireless adapters. SNAPlink EasySet provides visual indicators and easy-to-change configuration parameters such as baud rate, channel and network ID, data bits, parity, stop bits, flow control and more. SNAPlink EasySet is a visually intuitive tool for defining and configuring the SNAPlink products.

One SNAPlink Adaptor controls multiple SNAPlink serial wireless adapters (either RS-232 or RS-485/422).



SNAPlink Ordering Information

Part #	Name	Description
SLK232-010	SNAP Link 232	SNAP Mesh, RS-232 Wireless Serial Adapter, bundle includes SNAPlink, USB cable, US AC adapter
SLK485-010	SNAP Link 485	SNAP Mesh, RS-485/422, MODBUS Wireless Serial Adapter, bundle includes SNAPlink, USB cable, US AC adapter
SLK232-020	SNAP Link 232	SNAP Mesh, RS-232 Wireless Serial Adapter, CE, bundle includes SNAPlink, USB cable, EU+UK AC adapter
SLK485-020	SNAP Link 485	SNAP Mesh, RS-485/422, MODBUS Wireless Serial Adapter, CE, bundle includes SNAPlink, USB cable, EU + UK AC adapter