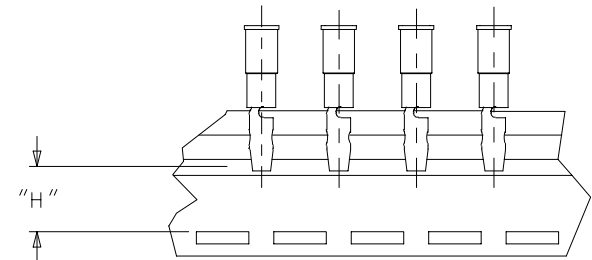
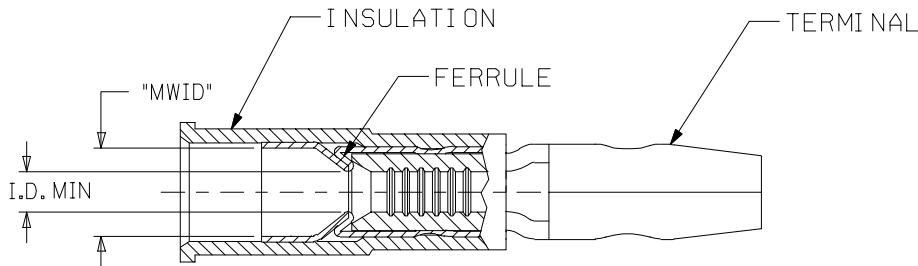
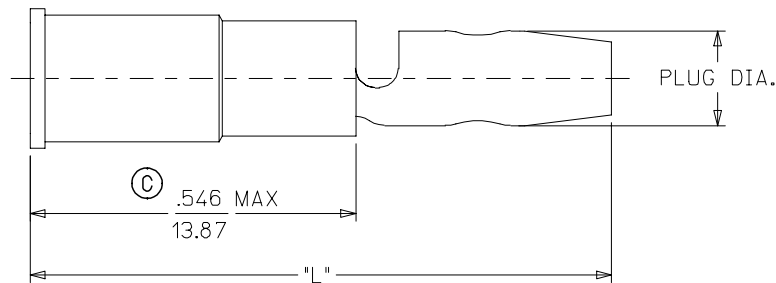


LOOSE PIECE		TAPE MOUNTED		WIRE RANGE AWG	INSULATION COLOR	I.D. MIN.	PLUG DIA.	MAX "L"	"MWID"	"H" ±.010/0.25
MATERIAL NO.	ENG. NO.	MATERIAL NO.	ENG. NO.							
190350001	A-559	190350002	A-559T	18-22	RED	.056/1.42	.180/4.57	1.046/26.57	.140/3.56	.495/12.57
190350003	A-569	190350004	A-569T	18-22	RED	.056/1.42	.156/3.96	.986/25.04	.140/3.56	.555/14.10
190350005	B-579	190350008	B-579T	14-16	BLUE	.084/2.13	.180/4.57	1.046/26.57	.170/4.32	.495/12.57
190350009	B-589	190350012	B-589T	14-16	BLUE	.084/2.13	.156/3.96	.986/25.04	.170/4.32	.555/14.10

©



TAPE MOUNTING DETAIL



SALES DRAWING

NOTE:

1. TERMINAL: MATERIAL COPPER .032 MAX  
FINISH: ELECTRO-TIN.  
FERRULE : MATERIAL: BRASS  
FINISH: ELECTRO-TIN.  
INSULATION: NYLON.
2. MWID = MAXIMUM WIRE INSULATION DIAMETER.
3. ASSEMBLY IS ROHS COMPLIANT.

©

CORRECTED DIM. & ADDED ROHS EC NO: ETC2007-0397 DRW: NEHLE 2007/04/27 CHKD: JMACNEIL 2007/05/09 APPR: JMACNEIL 2007/05/10	QUALITY SYMBOLS ▽=0 ▽=0	GENERAL TOLERANCES (UNLESS SPECIFIED)		DIMENSION STYLE IN/MM		SCALE ---	DESIGN UNITS INCH	THIRD ANGLE PROJECTION	
			mm	INCH	DRAWN BY BRE	DATE 2003/02/13	TITLE MALE BULLET SNAP PLUG, MOLDED, AVIKRIMP		
		4 PLACES	± ---	± ---	CHECKED BY HEB	DATE 2003/02/13	MOLEX INCORPORATED		
		3 PLACES	± ---	±.005	APPROVED BY RWD	DATE 2003/02/13	MATERIAL NO. SEE CHART	DOCUMENT NO. SD-19035-001	SHEET NO. 1 OF 1
2 PLACES	± 0.13	±.01	DRAFT WHERE APPLICABLE MUST REMAIN WITHIN DIMENSIONS		THIS DRAWING CONTAINS INFORMATION THAT IS PROPRIETARY TO MOLEX INCORPORATED AND SHOULD NOT BE USED WITHOUT WRITTEN PERMISSION				
1 PLACE	± 0.25	± ---	ANGULAR ±1/2°						