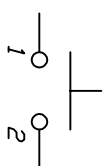
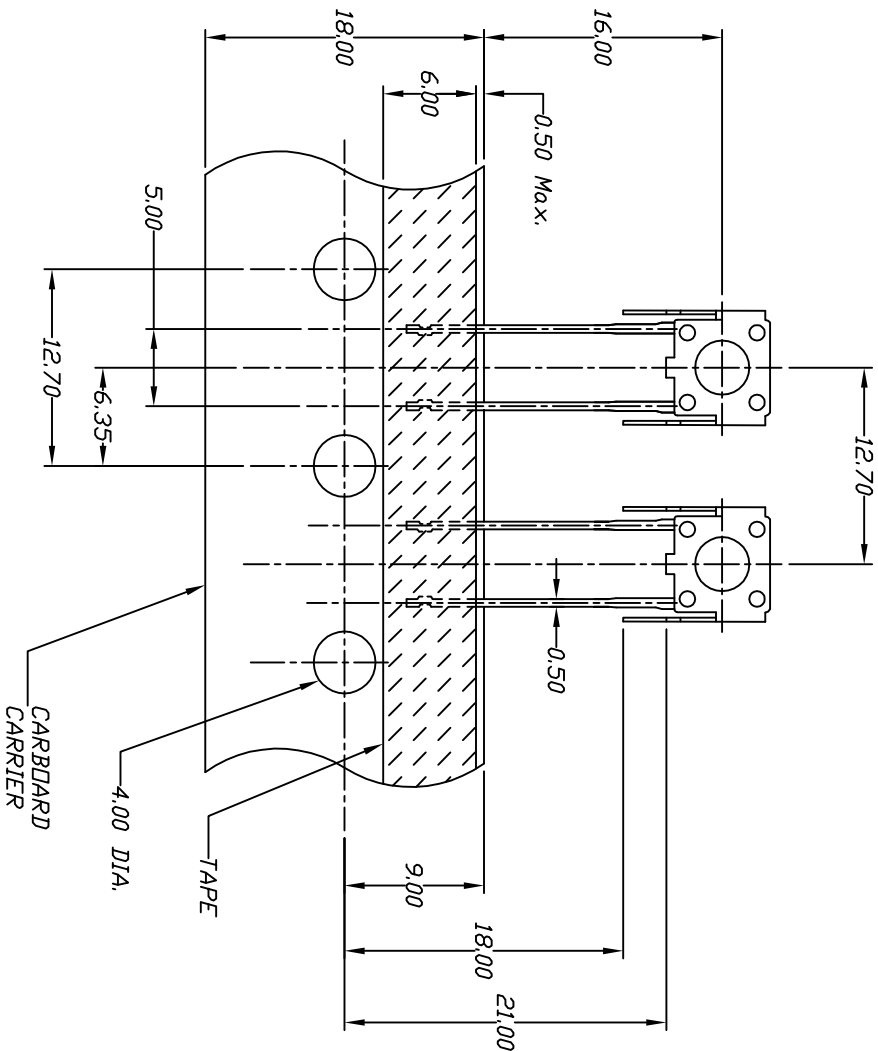
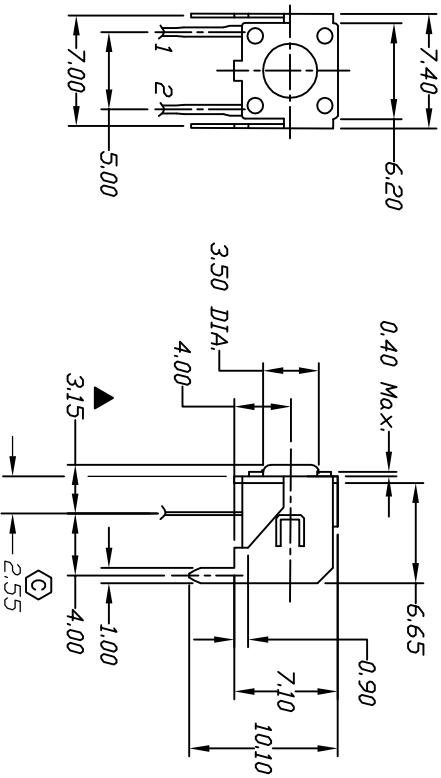


RECOMMEND P.C.B. LAYOUT



CIRCUIT: SPST

CONTACT CONFIGURATION



NOTES:

1. ALL DIMENSIONS IN MM
2. GENERAL TOLERANCE: 0.0=±0.4
0.00=±0.25
3. TERM. NOS. FOR REF. ONLY
4. CONTACT RATING: 50mA, @12VDC
5. OPERATING FORCE: 100±50gf
6. TRAVEL: 0.25 +0.2/-0.1mm
7. CONTACT RESISTANCE: 100 milliohms Max.
8. CARRIER IS FOLDED EVERY 25 PITCHES
(24 SWITCHES PER FOLD)
9. 700 SWITCHES PER BOX
10. DESIGNATE MAJOR DIMENSIONS
11. 2002/95/EC (ROHS) COMPLIANT

C	18905	ADD DIM TO TERMINAL	2/23/10	BLR
B	13210	NOTE 9 WAS 1000	6/13/03	AR
A	12352	WAS 2000495	8/6/02	CB
REV.	ECN No.	DESCRIPTION	DATE	CHKD

TITLE		SCALE		DATE		DR		DWG		REV	
TL58 WF100 (ACTuator =315mm)		2:1		2/23/10		BLR		P010610		C	
E-SWITCH®		LAMB INDUSTRIES									

THE INFORMATION CONTAINED IN THIS DOCUMENT IS PROPRIETARY TO E-SWITCH AND IS NOT TO BE COPIED OR TRANSMITTED