

# Customer Information Sheet

DRAWING No.: M60-605XX45

SHEET 2 OF 2

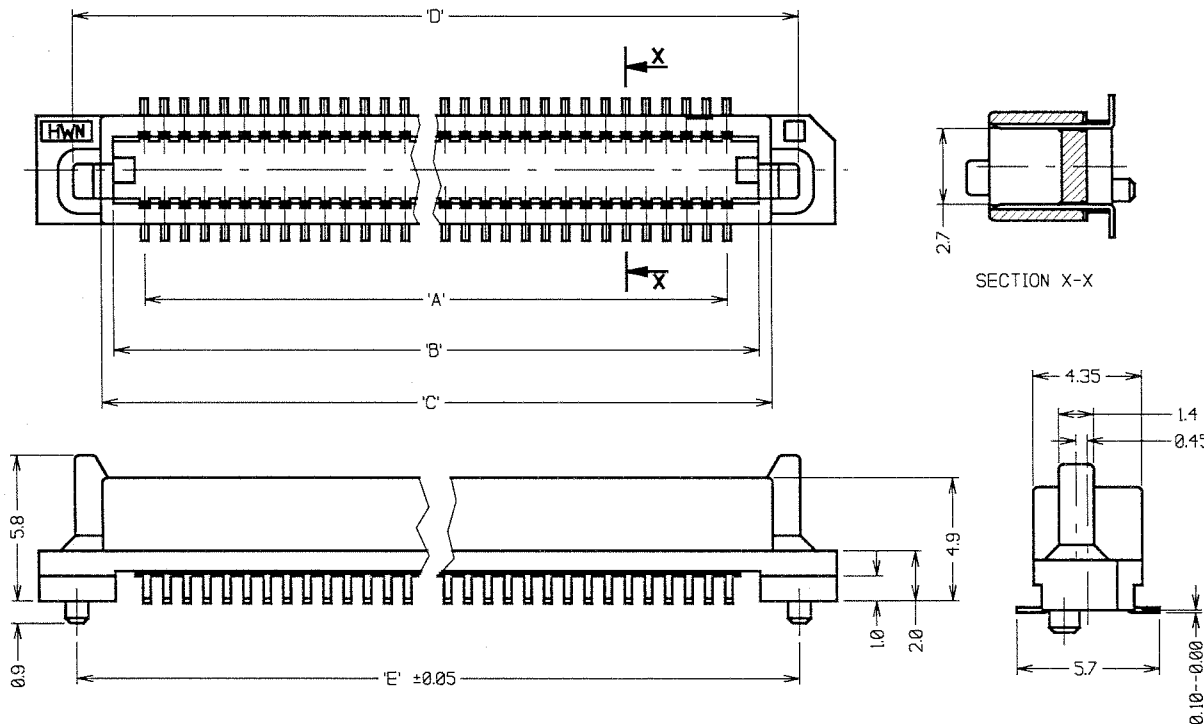
IF IN DOUBT - ASK

(C)

NOT TO SCALE

THIRD ANGLE PROJECTION

ALL DIMENSIONS IN mm



PART No.	No. OF CONTACTS	'A'	'B'	'C'	'D'	'E'	'F'
M60-6051045	10 + 10	7.2	9.7	10.7	12.9	12.8	15.8
M60-6051545	15 + 15	11.2	13.7	14.7	16.9	16.8	19.8
M60-6052045	20 + 20	15.2	17.7	18.7	20.9	20.8	23.8
M60-6052545	25 + 25	19.2	21.7	22.7	24.9	24.8	27.8
M60-6053045	30 + 30	23.2	25.7	26.7	28.9	28.8	31.8
M60-6054045	40 + 40	31.2	33.7	34.7	36.9	36.8	39.8
M60-6055045	50 + 50	39.2	41.7	42.7	44.9	44.8	47.8

**SPECIFICATIONS:**

**MATERIAL:**

MOULDING = LCP, UL94V-0

CONTACTS = PHOSPHOR BRONZE

**FINISH:**

CONTACTS:

0.05µ MIN GOLD OVER 1.27µ MIN NICKEL

0.5µ MIN GOLD ON CONTACT AREA.

**ELECTRICAL:**

CURRENT RATING = 0.5 AMPS

VOLTAGE RATING = 100V AC

DIELECTRIC WITHSTANDING VOLTAGE = 300V AC (1 MINUTE)

INSULATION RESISTANCE = 1000 MEGOHMS MIN (250V DC)

CONTACT RESISTANCE = 40 MILLIOHMS MAX

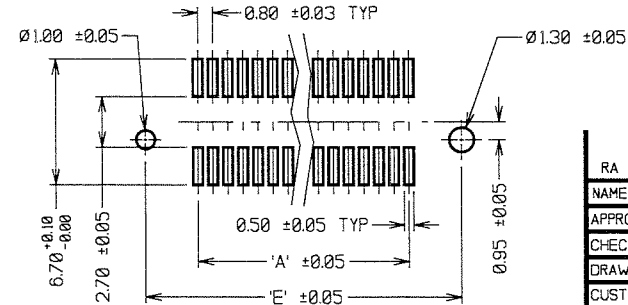
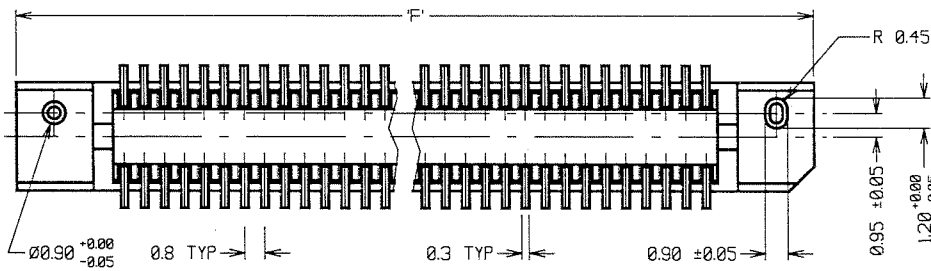
**MECHANICAL:**

DURABILITY = 30 CYCLES

**ENVIRONMENTAL:**

TEMPERATURE RANGE = -55°C TO +100°C

PACKING = TUBE



**NOTES.**

- MATES WITH M60-614XX45 OR M60-616XX45 TO GIVE BOARD-TO-BOARD HEIGHTS OF 6mm AND 8mm RESPECTIVELY.
- ALL TOLERANCES ±0.30 UNLESS OTHERWISE STATED.

ORDER CODE:  
**M60-605XX45**  
No. OF CONTACTS  
10, 15, 20, 25, 30, 40, 50

<b>HARWIN</b>		
HARWIN USA TEL: 603 893 5376 FAX: 603 893 5396 mjs@harwin.com	HARWIN Europe (UK) TEL: 023 9231 4545 FAX: 023 9231 4590 mjs@harwin.co.uk	HARWIN Asia TEL: +65 6 779 4989 FAX: +65 6 779 3868 mjs@harwin.com.sg

THIS DRAWING AND ANY INFORMATION OR DESCRIPTIVE MATTER SET OUT HEREON ARE CONFIDENTIAL AND COPYRIGHT PROPERTY OF THE HARWIN GROUP AND MUST NOT BE DISCLOSED, LOANED, COPIED OR USED FOR MANUFACTURING, TENDERING OR FOR ANY OTHER PURPOSE WITHOUT THEIR WRITTEN PERMISSION.

**TOLERANCES**  
X = ±1mm  
X.X = ±0.25mm  
X.XX = ±0.10mm  
X.XXX = ±0.01mm  
ANGLES = ±5°  
UNLESS STATED

**MATERIAL:**  
SEE ABOVE  
**FINISH:** SEE ABOVE  
**S/AREA:** mm<sup>2</sup>

**TITLE:**  
0.80mm PITCH SMT SOCKET CONNECTOR (5mm HIGH)  
**DRAWING NUMBER:**  
**M60-605XX45**

RA	9	19.02.08	9957
NAME	ISS.	DATE	C/NOTE
APPROVED: <i>[Signature]</i>			
CHECKED: <i>[Signature]</i>			
DRAWN: WJ BOURNE			
CUSTOMER REF:			
ASSEMBLY DRG:			