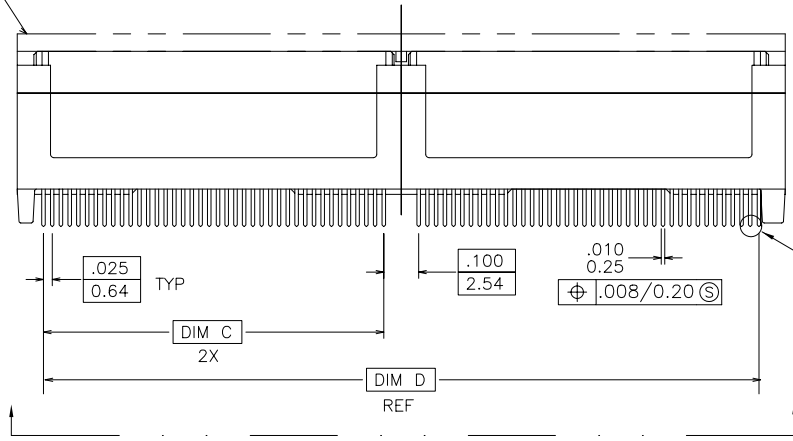
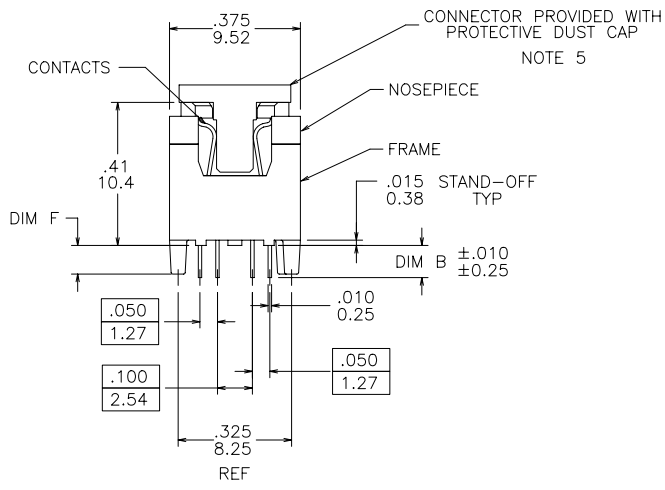
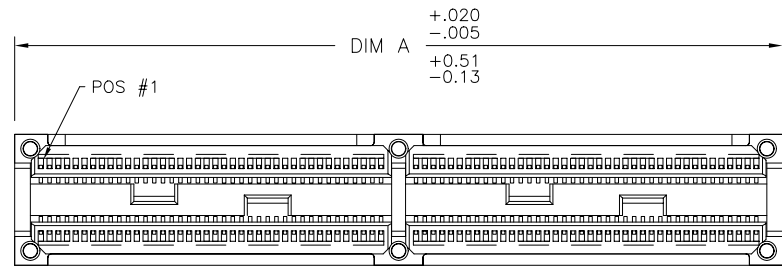
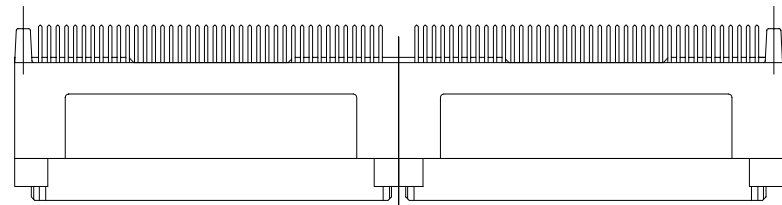


PRODUCT NUMBER
SEE TABLE

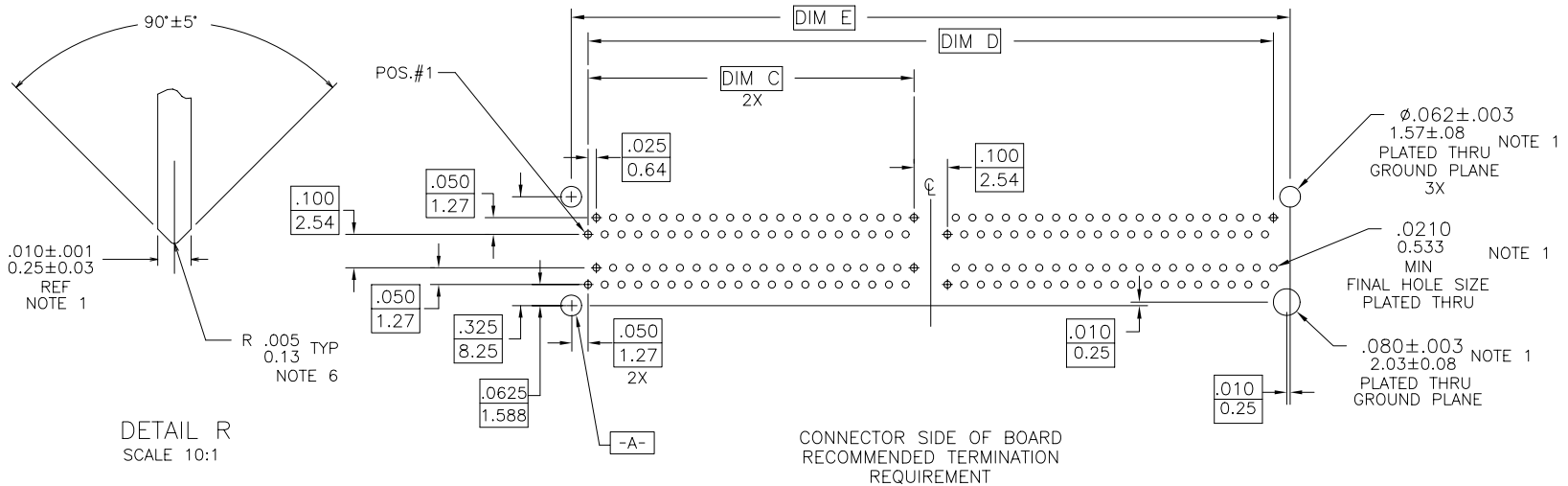


VIEW K (SHEET 2)

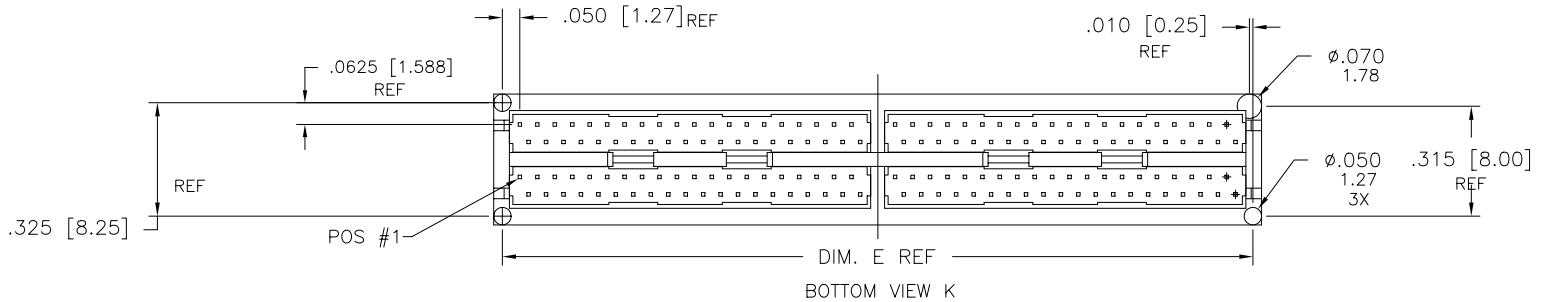
mat'l. code		surface ISO 1302 ✓		tolerance ISO 406 ISO 1101		projection ⊕		product family MICROPAX	
ltr		ecn no		date		tolerances unless otherwise specified		title	
H	v32226	MRC	12/23/93	angles	linear	.xx±.01/.3		MICROPAX .025M VERTICAL	
J	v60714	EPK	7/01/96			.xxx±.005/.13		RECEPT. DBL MODULE	
K	v71714	EPK	7/09/98	0°±2'		.xxxx±.0020/.051		scale 2:1	
L	v12115	CRG	8/16/01	dr	L. POTTEIGER	4/16/91		dwg no	
M	v20402	MEM	3/08/02	enr	T. LEMKE	4/16/91		sheet 1 of 3 size	
N	M05-0082	MHT	5/05/05	chr	T. LEMKE	4/16/91		89648 A3	
P	M06-0279	MNR	7/22/06	appd	T. LEMKE	4/16/91		type Product Customer Drawing	
sheet index	revision	P	P	P					
	sheet	1	2	3					



Copyright FCI



DETAIL R
SCALE 10:1



Copyright FCI

mat'l. code		surface ISO 1302 ✓		tolerance ISO 406 ISO 1101		projection INCH/MM		product family MICROPAX	
ltr		ecn no dr		date		tolerances unless otherwise specified		title	
P						angles linear .XX±.01/.3 .XXX±.005/.13 .XXXX±.0020/.051		MICROPAX .025M VERTICAL RECEPT. DBL MODULE	
						0°±2'		scale 2:1	
		dr		L. POTTEIGER		4/16/91		dwg no	
		enr		T. LEMKE		4/16/91		sheet 2 of 3 size	
		chr		T. LEMKE		4/16/91		89648 A3	
		appd		T. LEMKE		4/16/91		type Product Customer Drawing	
sheet index		revision sheet							



PRODUCT NUMBER	NO. OF CONTACTS	DIM A	DIM B	DIM C	DIM D	DIM E	DIM F	BOARD THICKNESS	PLATING
89648-001	160	2.200/55.88	.092/2.34	.975/24.76	2.050/52.07	2.150/54.61	.082/2.08	.062/1.58	NOTE 3
89648-002			.155/3.94				.144/3.66		NOTE 4
89648-001LF	160	2.200/55.88	.092/2.34	.975/24.76	2.050/52.07	2.150/54.61	.082/2.08	.062/1.58	NOTE 3
89648-002LF			.155/3.94				.144/3.66		NOTE 4

NOTES :

- ① ALL BOARD HOLES $\varnothing .006/.15$ A
- ② MATERIALS : DIELECTRIC : LCP
CONTACTS : Cu Be
FRAME : ZINC ALLOY #3
- ③ PLATING : -001
SOLDER TAILS : 150u"/3.81um Sn Pb
FRAME : 100u"/2.54um NICKEL
CONTACT : 30u"/.76um GXT OVER 50u"/1.27um Ni
LEAD FREE OPTION:
SOLDER TAILS : 150u"/3.81um Sn
FRAME : 100u"/2.54um NICKEL
CONTACT : 30u"/.76um GXT OVER 50u"/1.27um Ni
- ④ PLATING : -002
SOLDER TAILS : 150u"/3.81um Sn Pb
FRAME : 150u"/3.81um SnPb
CONTACT : 30u"/.76um GXT OVER 50u"/1.27um Ni
LEAD FREE OPTION:
SOLDER TAILS : 150u"/3.81um Sn
FRAME : 150u"/3.81um Sn
CONTACT : 30u"/.76um GXT OVER 50u"/1.27um Ni
- ⑤ DO NOT REMOVE PROCESSING CAP UNTIL SOLDERING IS COMPLETED. CAP WILL PREVENT POTENTIAL NOSE PIECE BOW DURING HIGH TEMP. SOLDERING PROCESS.
- ⑥ .002/0.05 MAX BURR PERMITTED.
- ⑦ PART NUMBERS WITH LF AT THE END ARE LEAD FREE.
- 8. THE HOUSING WILL WITHSTAND EXPOSURE TO 260°C PEAK TEMPERATURE FOR 20 SECONDS IN A CONVECTION, INFRA-RED OR VAPOR PHASE REFLOW OVEN. SEE APPLICATION NOTE/PROCEDURES IF THEY ARE AVAILABLE.
- THE HOUSING WILL WITHSTAND EXPOSURE TO 260°C PEAK TEMPERATURE FOR 20 SECONDS IN A WAVE SOLDER APPLICATION WITH A 1.5mm MINIMUM THICK CIRCUIT BOARD. SEE APPLICATION NOTES/PROCEDURES IF THEY ARE AVAILABLE
- ⑨ IF "LF" P/N THE PRODUCT MEETS EUROPEAN UNION DIRECTIVES AND OTHER COUNTRY REGULATION AS DESCRIBED IN GS-22-008.

mat'l. code		surface ISO 1302 <input checked="" type="checkbox"/>		tolerance ISO 406 ISO 1101		projection 		product family MICROPAX	
ltr	ecn	no	dr	date		tolerances unless otherwise specified		title	
P						angles	linear	INCH/MM	
						0°±2'		MICROPAX .025M VERTICAL RECEPT. DBL MODULE	
								scale 2:1	
						dr	L. POTTEIGER	4/16/91	
						enfr	T. LEMKE	4/16/91	
						chr	T. LEMKE	4/16/91	
						appd	T. LEMKE	4/16/91	
sheet index	revision sheet							FCJ	
								dwg no 89648 sheet 3 of 3 size A3	
								type Product Customer Drawing	

Copyright FCJ
FCJconnect.com