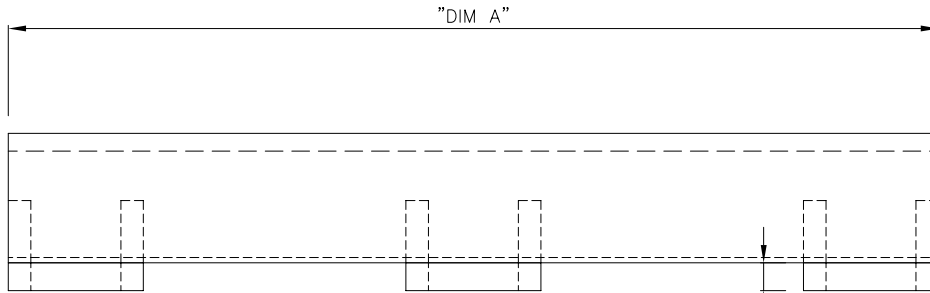
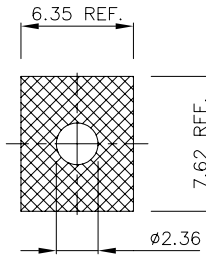


PRODUCT NUMBER 89628-XXX

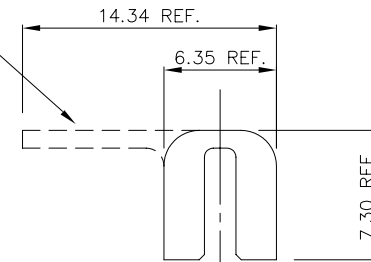
KEEP OUT AREA ON BOARD FOR STIFFENER/INSERT ATTACHMENT.

TAIL-PROTECT OPTION (SEE CHART ON PAGE 2)



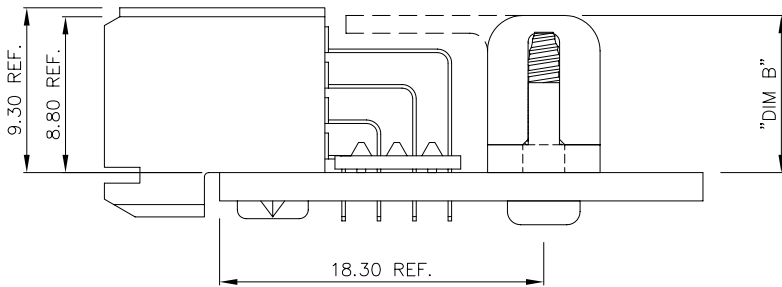
INSERTS SHOWN INSTALLED IN POSITION SEE NOTE BELOW

"DIM C" CLEARANCE FOR WASHOUT



TORX(tm) SELF-TAPPING SCREW. REQUIRES A #2 TORX(tm) DRIVER

NOTE: THIS PRODUCT COMES AS A KIT AND IS UNASSEMBLED. SEE CHART ON PAGE TWO FOR MORE INFORMATION.



mat'l. code		surface		tolerance		projection		product family	
-----		ISO 1302 ✓		ISO 406 ISO 1101		⊕		METRAL (tm)	
ltr	ecn	no	dr	date	tolerances unless otherwise specified		mm		title
K	v22878	SCS		10/21/92	angles	linear	xx ±.01/.3		BOARD STIFFENER ASSEMBLY
L	v23674	SCS		12/15/92			xxx ±.005/.13		
M	v30017	SCS		1/12/93	σ±2'		xxxx ±.0020/.050		scale 1:1
N	v41850	SCS		12/01/94	dr	STU STONER	9/15/90		FCJ
P	v50964	SCS		7/31/95	enfr	R. DOUTRICH	9/15/90		
R	v70347	MDF		3/04/97	chr	STU STONER	9/15/90		dwg no
S	M06-0286	MNR		7/27/06	appd	STU STONER	9/15/90		89628
sheet	revisor	S	S						sheet 1 of 2
index	sheet	1	2						size A3
								type Product Customer Drawing	

PRODUCT NUMBER	"DIM A" ±.70/.030 MM/IN	"DIM B"	"DIM C"	NUMBER OF INSERTS	NUMBER OF SCREWS	TAIL-PROTECT OPTION
89628-001	240/9.50	8.80/.345	1.5/.060	5	5	NO
89628-002	252/9.92	8.80/.345	1.5/.060	5	5	YES
89628-003	252/9.92	8.80/.345	1.5/.060	5	5	NO
89628-004	139.4/5.490	8.80/.345	1.5/.060	3	3	YES
89628-005	229.87/9.05	8.80/.345	1.5/.060	5	5	NO
89628-006	255.27/10.05	8.80/.345	1.5/.060	6	6	NO
89628-007	280.67/11.05	8.80/.345	1.5/.060	6	6	NO
89628-008	306.07/12.05	8.80/.345	1.5/.060	7	7	NO
89628-009	339.09/13.35	8.80/.345	1.5/.060	7	7	NO
89628-010	369.57/14.55	8.80/.345	1.5/.060	8	8	NO
89628-011	392.43/15.45	8.80/.345	1.5/.060	8	8	NO
89628-012	415.29/16.35	8.80/.345	1.5/.060	9	9	NO
89628-013	368/14.48	8.80/.345	1.5/.060	3	3	YES
89628-014	120/4.72	8.80/.345	1.5/.060	3	3	YES
89628-015	120/4.72	8.80/.345	1.5/.060	3	3	NO
89628-016	219.4/8.64	8.80/.345	1.5/.060	3	3	YES
89628-017	521/20.51	8.80/.345	1.5/.060	5	5	YES
89628-018	183/7.20	8.80/.345	1.5/.060	3	3	YES
89628-019	63.50/2.50	8.80/.345	1.5/.060	2	2	YES
89628-020	280.67/11.05	8.80/.345	1.5/.060	3	3	YES
89628-021	339.09/13.35	8.80/.345	1.5/.060	3	3	YES
89628-022	207/8.15	8.80/.345	1.5/.060	3	3	YES
89628-023	267/10.51	8.80/.345	1.5/.060	3	3	YES
89628-024	180/7.08	8.80/.345	1.5/.060	3	3	YES
89628-025	192/7.56	8.80/.345	1.5/.060	3	3	YES
89628-026	240/9.45	8.80/.345	1.5/.060	3	3	YES
89628-027	219.4/8.64	8.80/.345	1.5/.060	5	5	NO
89628-028	360.70/14.20	8.80/.345	1.5/.060	4	4	NO
89628-029	204/8.03	8.80/.345	1.5/.060	5	5	NO
89628-030	450/17.71	8.80/.345	1.5/.060	9	9	NO
89628-031	207/8.15	8.80/.345	1.5/.060	3	3	NO



FCIconnect.com

Copyright FCI

mat'l. code -----		surface ISO 1302 ✓	tolerance ISO 406 ISO 1101	projection 	product family METRAL (tm)
ltr	ecn	no	dr	date	tolerances unless otherwise specified
S					angles linear
					xx ±.01/.3
					xxx ±.005/.13
					σ±2' xxx ±.0020/.050
					dr STU STONER 9/15/90
					enfr R. DOUTRICH 9/15/90
					chr STU STONER 9/15/90
					appd STU STONER 9/15/90
sheet index	revision sheet				

title BOARD STIFFENER ASSEMBLY		scale 1:1	
dwg no 89628	sheet 2 of 2	size A3	
type Product Customer Drawing			