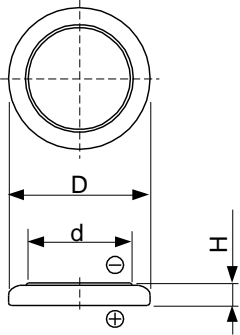


Cell Type ML1220 Specifications



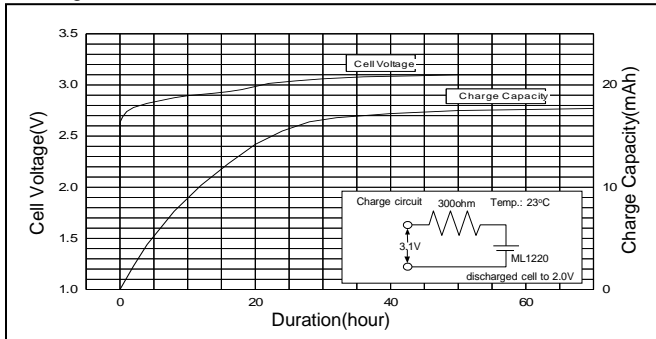
Nominal Capacity (mAh) ^{*1}	15	
Nominal Voltage (V)	3	
Standard Charge/Discharge Current (mA)	0.15	
Max. Discharge Current (mA)	Pulse ^{*2}	5
Charge/Discharge Cycle Characteristics	Discharging Depth of 20%	300
Charging Method (V)	Constant Voltage Charge	2.8 ~ 3.25
Operating Temperature Range (°C)	-20 ~ +60	
Dimensions (mm)	Diameter(D)	12.5
	Height(H)	2.0
Approx. Weight (g)	0.8	

*1 Nominal capacity is determined to an end voltage of 2.0V when the battery is allowed to discharge at a standard current level at 23°C.

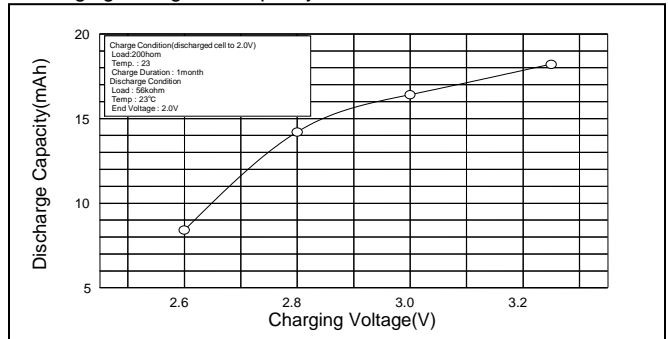
*2 Current value for obtaining 2.0V cell voltage when 15sec. pulse is applied at 50% discharge depth at 23 °C.

Typical Characteristics

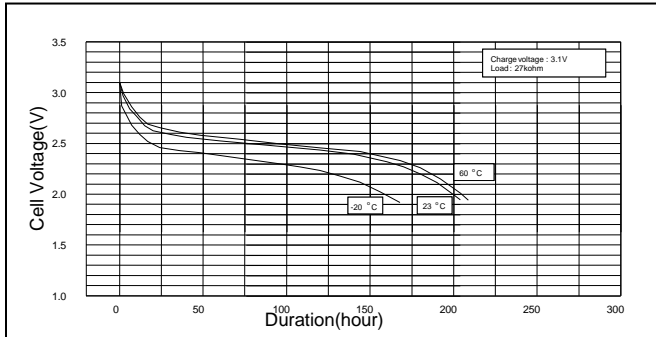
Charge Characteristics of ML1220



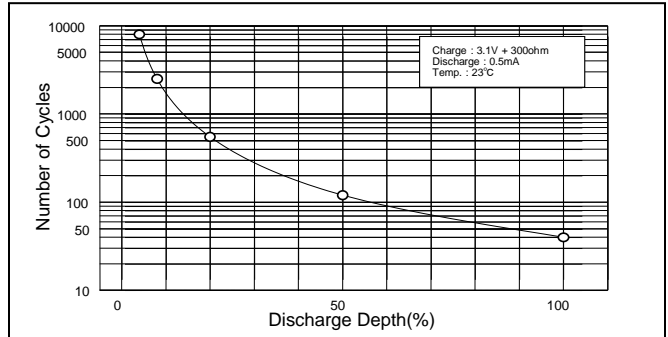
Charging Voltage vs. Capacity of ML1220



Temperature Characteristics of ML1220



Charge/ Discharge Cycle Characteristics of ML1220



Discharge Characteristics after Continuous Charge of ML1220

