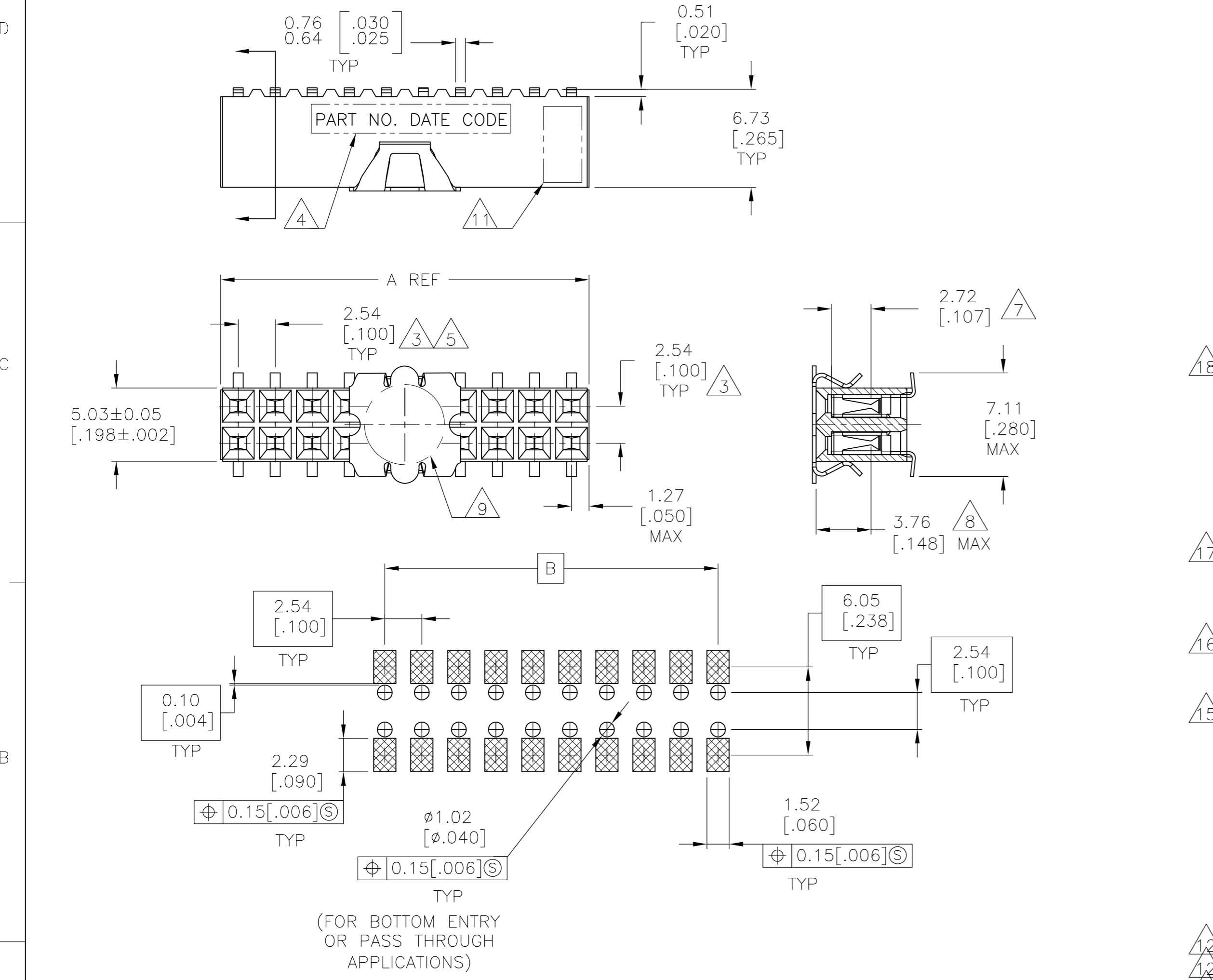


THIS DRAWING IS UNPUBLISHED. RELEASED FOR PUBLICATION  
 © COPYRIGHT - By - ALL RIGHTS RESERVED.

| LOC | DIST | REVISIONS |     |                           |         |     |      |
|-----|------|-----------|-----|---------------------------|---------|-----|------|
|     |      | P         | LTR | DESCRIPTION               | DATE    | DWN | APVD |
| AD  | 00   | J9        |     | REVISED PER ECO-13-005565 | 01APR13 | KH  | JO   |

FOR PART NUMBERS 5-147105-1 THRU 9-147105-0  
 SEE SHEET 2



RECOMMENDED PC BOARD LAYOUT  
 0.20[.008] THICK STENCIL

| FINISH        | EIA TAPE WIDTH | B            | A          | NO.OF POSN. | PART NUMBER    |               |    |            |
|---------------|----------------|--------------|------------|-------------|----------------|---------------|----|------------|
| 1             | B              | A            | B          | A           | 99.06 [3.900]  |               |    |            |
|               |                |              |            |             | 101.60 [4.000] |               |    |            |
|               |                |              |            |             | 80             | 4-147105-0    |    |            |
|               |                |              |            |             | 96.52 [3.800]  | 99.06 [3.900] | 78 | 3-147105-9 |
|               |                |              |            |             | 93.98 [3.700]  | 96.52 [3.800] | 76 | 3-147105-8 |
|               |                |              |            |             | 91.44 [3.600]  | 93.98 [3.700] | 74 | 3-147105-7 |
|               |                |              |            |             | 88.90 [3.500]  | 91.44 [3.600] | 72 | 3-147105-6 |
|               |                |              |            |             | 86.36 [3.400]  | 88.90 [3.500] | 70 | 3-147105-5 |
|               |                |              |            |             | 83.82 [3.300]  | 86.36 [3.400] | 68 | 3-147105-4 |
|               |                |              |            |             | 81.28 [3.200]  | 83.82 [3.300] | 66 | 3-147105-3 |
|               |                |              |            |             | 78.74 [3.100]  | 81.28 [3.200] | 64 | 3-147105-2 |
|               |                |              |            |             | 76.20 [3.000]  | 78.74 [3.100] | 62 | 3-147105-1 |
|               |                |              |            |             | 73.66 [2.900]  | 76.20 [3.000] | 60 | 3-147105-0 |
|               |                |              |            |             | 71.12 [2.800]  | 73.66 [2.900] | 58 | 2-147105-9 |
|               |                |              |            |             | 68.58 [2.700]  | 71.12 [2.800] | 56 | 2-147105-8 |
|               |                |              |            |             | 66.04 [2.600]  | 68.58 [2.700] | 54 | 2-147105-7 |
|               |                |              |            |             | 63.50 [2.500]  | 66.04 [2.600] | 52 | 2-147105-6 |
|               |                |              |            |             | 60.96 [2.400]  | 63.50 [2.500] | 50 | 2-147105-5 |
|               |                |              |            |             | 58.42 [2.300]  | 60.96 [2.400] | 48 | 2-147105-4 |
|               |                |              |            |             | 55.88 [2.200]  | 58.42 [2.300] | 46 | 2-147105-3 |
|               |                |              |            |             | 53.34 [2.100]  | 55.88 [2.200] | 44 | 2-147105-2 |
|               |                |              |            |             | 50.80 [2.000]  | 53.34 [2.100] | 42 | 2-147105-1 |
|               |                |              |            |             | 48.26 [1.900]  | 50.80 [2.000] | 40 | 2-147105-0 |
|               |                |              |            |             | 45.72 [1.800]  | 48.26 [1.900] | 38 | 1-147105-9 |
| 43.18 [1.700] | 45.72 [1.800]  | 36           | 1-147105-8 |             |                |               |    |            |
| 40.64 [1.600] | 43.18 [1.700]  | 34           | 1-147105-7 |             |                |               |    |            |
| 38.10 [1.500] | 40.64 [1.600]  | 32           | 1-147105-6 |             |                |               |    |            |
| 35.56 [1.400] | 38.10 [1.500]  | 30           | 1-147105-5 |             |                |               |    |            |
| 33.02 [1.300] | 35.56 [1.400]  | 28           | 1-147105-4 |             |                |               |    |            |
| 30.48 [1.200] | 33.02 [1.300]  | 26           | 1-147105-3 |             |                |               |    |            |
| 27.94 [1.100] | 30.48 [1.200]  | 24           | 1-147105-2 |             |                |               |    |            |
| 25.40 [1.000] | 27.94 [1.100]  | 22           | 1-147105-1 |             |                |               |    |            |
| 22.86 [0.900] | 25.40 [1.000]  | 20           | 1-147105-0 |             |                |               |    |            |
| 20.32 [0.800] | 22.86 [0.900]  | 18           | 147105-9   |             |                |               |    |            |
| 17.78 [0.700] | 20.32 [0.800]  | 16           | 147105-8   |             |                |               |    |            |
| 15.24 [0.600] | 17.78 [0.700]  | 14           | 147105-7   |             |                |               |    |            |
| 12.70 [0.500] | 15.24 [0.600]  | 12           | 147105-6   |             |                |               |    |            |
| 10.16 [0.400] | 12.70 [0.500]  | 10           | 147105-5   |             |                |               |    |            |
| 7.62 [0.300]  | 10.16 [0.400]  | 8            | 147105-4   |             |                |               |    |            |
| 5.08 [0.200]  | 7.62 [0.300]   | 6            | 147105-3   |             |                |               |    |            |
| 2.54 [0.100]  | 5.08 [0.200]   | 4            | 147105-2   |             |                |               |    |            |
| 24mm          | -              | 2.54 [0.100] | 2          | 147105-1    |                |               |    |            |

| THIS DRAWING IS A CONTROLLED DOCUMENT. |  | DWN              | 06NOV02 | M.BINNER   |
|--|--|------------------|---------|--|
| DIMENSIONS: mm [INCHES]                |  | CHK              | 06NOV02 |  |
| TOLERANCES UNLESS OTHERWISE SPECIFIED: |  | J.OLSON          |         | TE Connectivity  |
| 0 PLC ± -                              |  | J.OLSON          |         |  |
| 1 PLC ± -                              |  | APVD             |         | NAME   |
| 2 PLC ± .005[0.13]                     |  | J.OLSON          |         |  |
| 3 PLC ± -                              |  | PRODUCT SPEC     |         | RECEPTACLE ASSEMBLY, MOD IV,<br>DOUBLE ROW, DUAL ENTRY, .100X.100CL,<br>SURFACE MOUNT, AMPMODU |
| 4 PLC ± -                              |  | APPLICATION SPEC |         |  |
| ANGLES ± -                             |  | 108-25022        |         | SIZE   |
| FINISH                                 |  | WEIGHT           |         | CAGE CODE  |
| SEE TABLE                              |  | 114-25018        |         | DRAWING NO   |
|  |  | CUSTOMER DRAWING |         | RESTRICTED TO  |
|  |  | SCALE            |         | 4:1  |
|  |  | SHEET            |         | 1 of 2   |
|  |  | REV              |         | J9   |

THIS DRAWING IS UNPUBLISHED. RELEASED FOR PUBLICATION  
 © COPYRIGHT - By - ALL RIGHTS RESERVED.


| LOC |     | DIST        |  | REVISIONS |      |     |      |  |
|-----|-----|-------------|--|-----------|------|-----|------|--|
| P   | LTR | DESCRIPTION |  |           | DATE | DWN | APVD |  |
|     |     | SEE SHEET 1 |  |           |      |     |      |  |

- 1 HOUSING: FLAME RETARDANT, GLASS FILLED, POLYESTER, COLOR: BLACK.  
CONTACT: PHOSPHOR BRONZE  
VACUUM COVER: STAINLESS STEEL
- 2 CONTACT: DUPLEX PLATED 0.76µm[.000030] GOLD IN CONTACT AREA, 3.81-7.62µm[.000150-.000300] BRIGHT TIN-LEAD ON, LEADS, ALL OVER 1.27µm[.000050] MINIMUM NICKEL
- 3 THESE DIMENSIONS PERTAIN TO CAVITY CENTERLINES ONLY NOT TO CONTACT LOCATIONS
- 4 MARK PART NUMBER AND DATE CODE, IN APPROXIMATE LOCATION SHOWN, EITHER SIDE.
- 5 TOLERANCE IS NON-CUMULATIVE.
- 6 2 POSITION DATE CODE IS MARKED OPPOSITE SIDE OF TE CONNECTIVITY LOGO.
- 7 POINT OF MEASUREMENT DIMENSION FOR PLATING THICKNESS (INSIDE CONTACT BEAM).
- 8 POINT-OF-CONTACT DIMENSION.
- 9 ø5.51[.217] MIN TARGET AREA FOR VACUUM PICK UP. COVER TO BE REMOVED AFTER SOLDERING.
- 10 PACKAGED IN TAPE & REEL PER EIA 481 SPECIFICATION.
- 11 TE CONNECTIVITY TRADEMARK AND CSA LOGO ARE MOLDED INTO HOUSING.
- 12 NO PART NUMBER REQUIRED ON THIS PART.
- 13 CONTACT: DUPLEX PLATE CONNECTIVITYD 0.76µm[.000030] GOLD IN CONTACT AREA, 3.81-7.62µm[.000150-.000300] MATTE TIN ON LEADS, ALL OVER 1.27µm[.000050] MINIMUM NICKEL.
- 14 ROHS 2002/95/EC COMPLIANT.
- 15 SUPERRSEDED BY 6-147105-5
- 16 SUPERRSEDED BY 6-147105-8
- 17 SUPERRSEDED BY 7-147105-2
- 18 SUPERRSEDED BY 8-147105-0

|          |              |               |    |            |
|----------|--------------|---------------|----|------------|
| 120mm    | 99.06[3.900] | 101.60[4.000] | 80 | 9-147105-0 |
|          | 96.52[3.800] | 99.06[3.900]  | 78 | 8-147105-9 |
|          | 93.98[3.700] | 96.52[3.800]  | 76 | 8-147105-8 |
|          | 91.44[3.600] | 93.98[3.700]  | 74 | 8-147105-7 |
|          | 88.90[3.500] | 91.44[3.600]  | 72 | 8-147105-6 |
|          | 86.36[3.400] | 88.90[3.500]  | 70 | 8-147105-5 |
|          | 83.82[3.300] | 86.36[3.400]  | 68 | 8-147105-4 |
|          | 81.28[3.200] | 83.82[3.300]  | 66 | 8-147105-3 |
|          | 78.74[3.100] | 81.28[3.200]  | 64 | 8-147105-2 |
|          | 76.20[3.000] | 78.74[3.100]  | 62 | 8-147105-1 |
|          | 73.66[2.900] | 76.20[3.000]  | 60 | 8-147105-0 |
|          | 71.12[2.800] | 73.66[2.900]  | 58 | 7-147105-9 |
| 88mm     | 68.58[2.700] | 71.12[2.800]  | 56 | 7-147105-8 |
|          | 66.04[2.600] | 68.58[2.700]  | 54 | 7-147105-7 |
|          | 63.50[2.500] | 66.04[2.600]  | 52 | 7-147105-6 |
|          | 60.96[2.400] | 63.50[2.500]  | 50 | 7-147105-5 |
|          | 58.42[2.300] | 60.96[2.400]  | 48 | 7-147105-4 |
| 72mm     | 55.88[2.200] | 58.42[2.300]  | 46 | 7-147105-3 |
|          | 53.34[2.100] | 55.88[2.200]  | 44 | 7-147105-2 |
|          | 50.80[2.000] | 53.34[2.100]  | 42 | 7-147105-1 |
|          | 48.26[1.900] | 50.80[2.000]  | 40 | 7-147105-0 |
|          | 45.72[1.800] | 48.26[1.900]  | 38 | 6-147105-9 |
|          | 43.18[1.700] | 45.72[1.800]  | 36 | 6-147105-8 |
|          | 40.64[1.600] | 43.18[1.700]  | 34 | 6-147105-7 |
|          | 38.10[1.500] | 40.64[1.600]  | 32 | 6-147105-6 |
|          | 35.56[1.400] | 38.10[1.500]  | 30 | 6-147105-5 |
|          | 33.02[1.300] | 35.56[1.400]  | 28 | 6-147105-4 |
| 44mm     | 30.48[1.200] | 33.02[1.300]  | 26 | 6-147105-3 |
|          | 27.94[1.100] | 30.48[1.200]  | 24 | 6-147105-2 |
|          | 25.40[1.000] | 27.94[1.100]  | 22 | 6-147105-1 |
|          | 22.86[.900]  | 25.40[1.000]  | 20 | 6-147105-0 |
|          | 20.32[.800]  | 22.86[.900]   | 18 | 5-147105-9 |
|          | 17.78[.700]  | 20.32[.800]   | 16 | 5-147105-8 |
|          | 15.24[.600]  | 17.78[.700]   | 14 | 5-147105-7 |
|          | 12.70[.500]  | 15.24[.600]   | 12 | 5-147105-6 |
|          | 10.16[.400]  | 12.70[.500]   | 10 | 5-147105-5 |
|          | 7.62[.300]   | 10.16[.400]   | 8  | 5-147105-4 |
| 24mm     | 5.08[.200]   | 7.62[.300]    | 6  | 5-147105-3 |
|          | 2.54[.100]   | 5.08[.200]    | 4  | 5-147105-2 |
| OBSELETE |              | 2.54[.100]    | 2  | 5-147105-1 |

| FINISH | EIA TAPE WIDTH | B | A | NO.OF POSN. | PART NUMBER |
|--------|----------------|---|---|-------------|-------------|
|        |                |   |   |             |             |

|  |  |                      |   |
|--|--|----------------------|---|
| THIS DRAWING IS A CONTROLLED DOCUMENT.   |  | DWN M.BINNER 06NOV02 |  TE Connectivity |
| DIMENSIONS: mm [INCHES]  |  | CHK J.OLSON 06NOV02  |   |
| TOLERANCES UNLESS OTHERWISE SPECIFIED:   |  | APVD J.OLSON 06NOV02 |   |
| 0 PLC ± -<br>1 PLC ± -<br>2 PLC ± .005[0.13]<br>3 PLC ± -<br>4 PLC ± -<br>ANGLES ± - |  | NAME                 |   |
| MATERIAL   |  | PRODUCT SPEC         | RECEPTACLE ASSEMBLY, MOD IV, DOUBLE ROW, DUAL ENTRY, .100X.100CL, SURFACE MOUNT, AMPMODU              |
| SEE TABLE  |  | APPLICATION SPEC     | SIZE CAGE CODE DRAWING NO RESTRICTED TO   |
|  |  | 108-25022            | A2 00779 C=147105   |
|  |  | WEIGHT 114-25018     | SCALE 1:1 SHEET 2 OF 2 REV J9   |
|  |  | CUSTOMER DRAWING     |   |